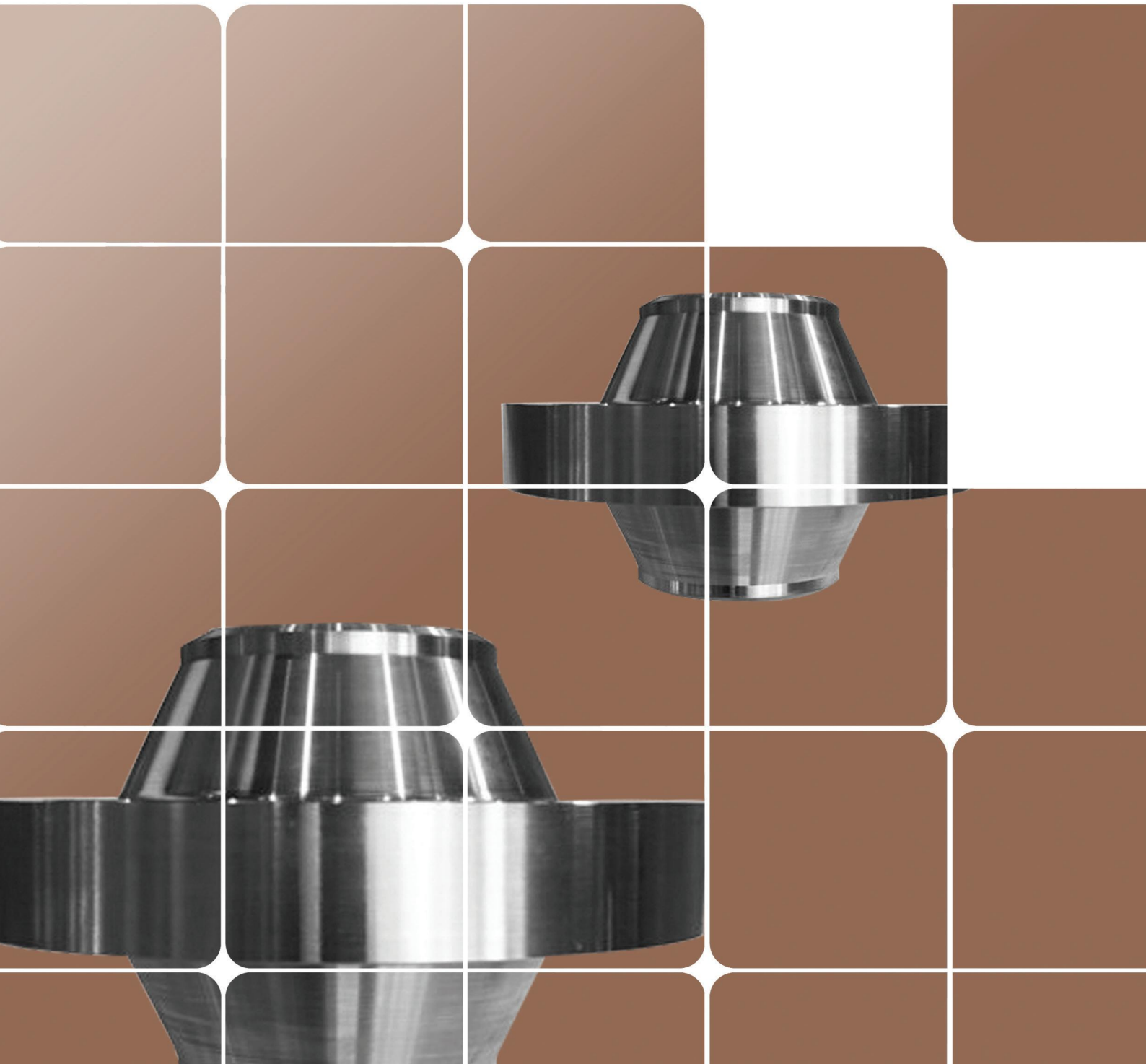
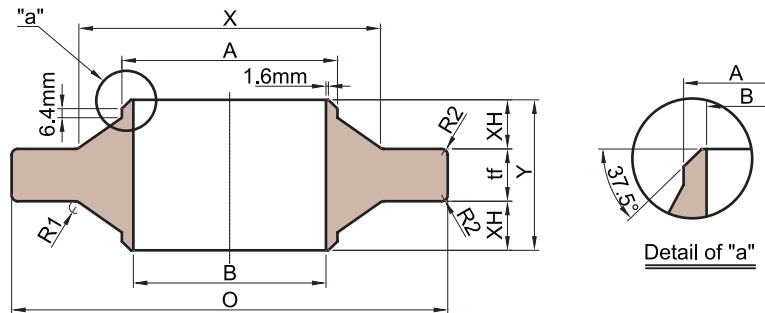


ANCHOR FLANGES

- Class 150 Flanges
- Class 300 Flanges
- Class 400 Flanges
- Class 600 Flanges
- Class 900 Flanges
- Class 1500 Flanges
- Class 2500 Flanges



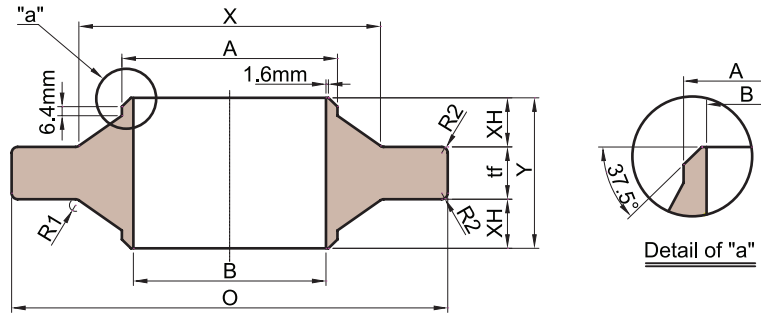
CLASS 150 FLANGES



Unit : mm

Nominal Pipe Size	I.D of Flange	O.D of Flange	Thick-ness	Length Through Hub	Length Through Hub	Diam. Of Hub	Hub Diam. Top	Fillet Radius Min.	
	B	O	tf	XH	Y	X	A	R1	R2
1/2	15.8	88.9	9.7	18.2	46.0	30.2	21.3	4	2
3/4	20.9	98.6	11.2	19.8	50.8	38.1	26.7	4	2
1	26.6	108.0	12.7	20.6	53.8	49.3	33.5	4	2
1 1/4	35.1	117.3	14.2	20.7	55.6	58.7	42.2	4	2
1 1/2	40.9	127.0	15.7	22.4	60.5	65.0	48.3	4	2
2	52.5	152.4	17.5	22.2	62.0	77.7	60.5	4	2
2 1/2	62.7	177.8	20.6	23.9	68.3	90.4	73.2	4	2
3	77.9	190.5	22.4	23.0	68.3	108.0	88.9	4	3
4	102.3	228.6	22.4	26.2	74.7	134.9	114.3	6	3
5	128.2	254.0	22.4	32.5	87.4	163.6	141.2	6	3
6	154.1	279.4	23.9	31.8	87.4	192.0	168.4	6	3
8	202.7	342.9	26.9	36.6	100.1	246.1	219.2	6	3
10	254.5	406.4	28.4	35.8	100.1	304.8	273.1	8	3
12	304.8	482.6	30.2	41.3	112.8	365.3	323.9	8	3
14	336.6	533.4	33.3	46.1	125.5	400.1	355.6	8	4
16	387.4	596.9	35.1	45.2	125.5	457.2	406.4	8	4
18	438.2	635.0	38.1	50.0	138.2	505.0	457.2	10	4
20	489.0	698.5	41.1	50.8	142.7	558.8	508.0	10	4
24	590.6	812.8	46.0	52.5	150.9	663.4	609.6	10	4

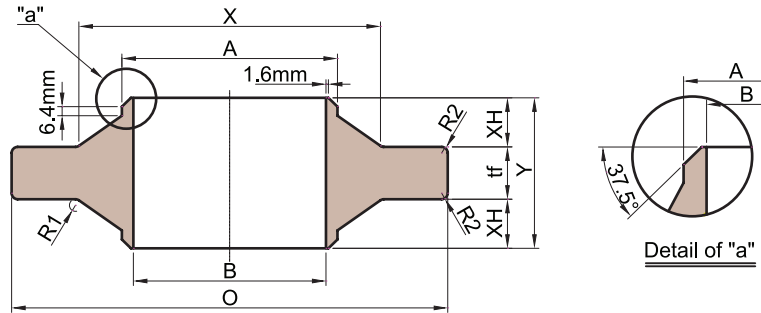
CLASS 300 FLANGES



Unit : mm

Nominal Pipe Size	I.D of Flange	O.D of Flange	Thick-ness	Length Through Hub	Length Through Hub	Diam. Of Hub	Hub Diam. Top	Fillet Radius Min.	
	B	O	tf	XH	Y	X	A	R1	R2
1/2	15.8	95.3	14.2	18.3	50.8	38.1	21.3	4	2
3/4	20.9	117.3	15.7	19.9	55.6	47.8	26.7	4	2
1	26.6	124.0	17.5	21.5	60.5	53.8	33.5	4	2
1 1/4	35.1	133.4	19.1	22.2	63.5	63.5	42.2	4	2
1 1/2	40.9	155.4	20.6	23.1	66.8	69.9	48.3	4	2
2	52.5	165.1	22.4	23.0	68.3	84.1	60.5	4	2
2 1/2	62.7	190.5	25.4	24.6	74.7	100.1	73.2	4	3
3	77.9	209.6	28.4	24.6	77.7	117.3	88.9	4	3
4	102.3	254.0	31.8	26.3	84.3	146.1	114.3	6	3
5	128.2	279.4	35.1	31.0	97.0	177.8	141.2	6	3
6	154.1	317.5	36.6	30.2	97.0	206.2	168.4	6	3
8	202.7	381.0	41.1	34.3	109.7	260.4	219.2	6	3
10	254.5	444.5	47.8	34.0	115.8	320.5	273.1	8	3
12	304.8	520.7	50.8	38.9	128.5	374.7	323.9	8	4
14	336.6	584.2	53.8	43.7	141.2	425.5	355.6	8	4
16	387.4	647.7	57.2	43.7	144.5	482.6	406.4	8	4
18	438.2	711.2	60.5	48.4	157.2	533.4	457.2	10	4
20	489.0	774.7	63.5	48.5	160.5	587.2	508.0	10	4
24	590.6	914.4	69.9	48.4	166.6	701.5	609.6	10	4

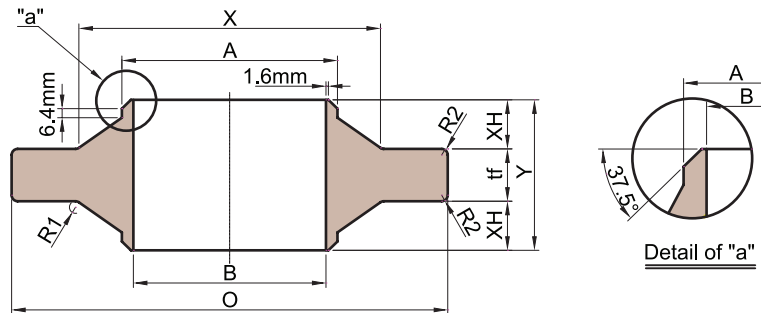
CLASS 400 FLANGES



Unit : mm

Nominal Pipe Size	I.D of Flange	O.D of Flange	Thick-ness	Length Through Hub	Length Through Hub	Diam. Of Hub	Hub Diam. Top	Fillet Radius Min.	
	B	O	tf	XH	Y	X	A	R1	R2
1/2	15.8	95.3	14.2	19.1	52.3	38.1	21.3	4	2
3/4	20.9	117.3	15.7	20.7	57.2	47.8	26.7	4	2
1	26.6	124.0	17.5	22.2	62.0	53.8	33.5	4	2
1 1/4	35.1	133.4	20.6	23.0	66.5	63.5	42.2	4	2
1 1/2	40.9	155.4	22.4	23.7	69.9	69.9	48.3	4	2
2	52.5	165.1	25.4	23.9	73.2	84.1	60.5	4	2
2 1/2	62.7	190.5	28.4	25.4	79.2	100.1	73.2	4	3
3	77.9	209.6	31.8	25.4	82.6	117.3	88.9	4	3
4	102.3	254.0	35.1	26.9	88.9	146.1	114.3	6	3
5	128.2	279.4	38.1	31.8	101.6	177.8	141.2	6	3
6	154.1	317.5	41.1	31.0	103.1	206.2	168.4	6	3
8	202.7	381.0	47.8	34.8	117.3	260.4	219.2	6	3
10	254.5	444.5	53.8	35.1	124.0	320.5	273.1	8	3
12	304.8	520.7	57.2	39.8	136.7	374.7	323.9	8	4
14	336.6	584.2	60.5	44.5	149.4	425.5	355.6	8	4
16	387.4	647.7	63.5	44.5	152.4	482.6	406.4	8	4
18	438.2	711.2	66.5	49.3	165.1	533.4	457.2	10	4
20	489.0	774.7	69.9	49.1	168.1	587.2	508.0	10	4
24	590.6	914.4	76.2	49.3	174.8	701.5	609.6	10	4

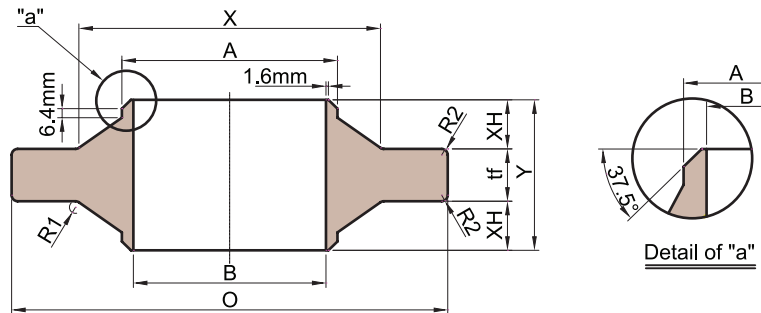
CLASS 600 FLANGES



Unit : mm

Nominal Pipe Size	I.D. of Flange	O.D. of Flange	Thick-ness	Length Through Hub	Length Through Hub	Diam. Of Hub	Hub Diam. Top	Fillet Radius Min.	
	B	O	th	XH	Y	X	A	R1	R2
1/2	15.8	95.3	14.2	19.1	52.3	38.1	21.3	4	2
3/4	20.9	117.3	15.7	20.7	57.2	47.8	26.7	4	2
1	26.6	124.0	17.5	22.2	62.0	53.8	33.5	4	2
1 1/4	35.1	133.4	20.6	23.0	66.5	63.5	42.2	4	2
1 1/2	40.9	155.4	22.4	23.7	69.9	69.9	48.3	4	2
2	52.5	165.1	25.4	23.9	73.2	84.1	60.5	4	2
2 1/2	62.7	190.5	28.4	25.4	79.2	100.1	73.2	4	3
3	77.9	209.6	31.8	25.4	82.6	117.3	88.9	4	3
4	102.3	273.1	38.1	31.8	101.6	152.4	114.3	6	3
5	128.2	330.2	44.5	34.9	114.3	189.0	141.2	6	3
6	154.1	355.6	47.8	34.8	117.3	222.3	168.4	6	3
8	202.7	419.1	55.6	38.9	133.4	273.1	219.2	6	3
10	254.5	508.0	63.5	44.5	152.4	342.9	273.1	8	3
12	304.8	558.8	66.5	44.5	155.4	400.1	323.9	8	4
14	336.6	603.3	69.9	47.6	165.1	431.8	355.6	8	4
16	387.4	685.8	76.2	50.8	177.8	495.3	406.4	8	4
18	438.2	743.0	82.6	50.8	184.2	546.1	457.2	10	4
20	489.0	812.8	88.9	50.8	190.5	609.6	508.0	10	4
24	590.6	939.8	101.6	50.8	203.2	717.6	609.6	10	4

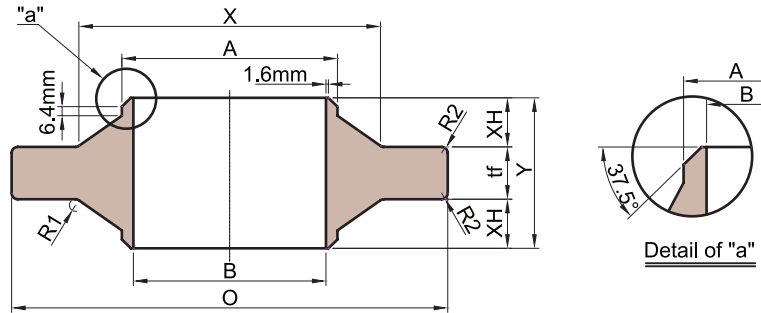
CLASS 900 FLANGES



Unit : mm

Nominal Pipe Size	I.D of Flange	O.D of Flange	Thick-ness	Length Through Hub	Length Through Hub	Diam. Of Hub	Hub Diam. Top	Fillet Radius Min.	
	B	O	tf	XH	Y	X	A	R1	R2
1/2	15.8	120.7	22.4	19.1	60.5	38.1	21.3	4	2
3/4	20.9	130.0	25.4	22.2	69.9	44.5	26.7	4	2
1	26.6	149.4	28.4	22.4	73.2	52.3	33.5	4	2
1 1/4	35.1	158.8	28.4	22.4	73.2	63.5	42.2	4	2
1 1/2	40.9	177.8	31.8	25.4	82.6	69.9	48.3	4	2
2	52.5	215.9	38.1	31.8	101.6	104.6	60.5	4	3
2 1/2	62.7	244.3	41.1	31.8	104.6	124.0	73.2	4	3
3	77.9	241.3	38.1	31.8	101.6	127.0	88.9	4	3
4	102.3	292.1	44.5	34.9	114.3	158.8	114.3	6	3
5	128.2	349.3	50.8	38.1	127.0	190.5	141.2	6	3
6	154.1	381.0	55.6	42.0	139.7	235.0	168.4	6	3
8	202.7	469.9	63.5	49.3	162.1	298.5	219.2	6	4
10	254.5	546.1	69.9	57.2	184.2	368.3	273.1	8	4
12	304.8	609.6	79.2	60.5	200.2	419.1	323.9	8	4
14	336.6	641.4	85.9	63.5	212.9	450.9	355.6	8	4
16	387.4	704.9	88.9	63.5	215.9	508.0	406.4	8	4
18	438.2	787.4	101.6	63.5	228.6	565.2	457.2	10	4
20	489.0	857.3	108.0	69.9	247.7	622.3	508.0	10	4
24	590.6	1041.4	139.7	76.2	292.1	749.3	609.6	10	4

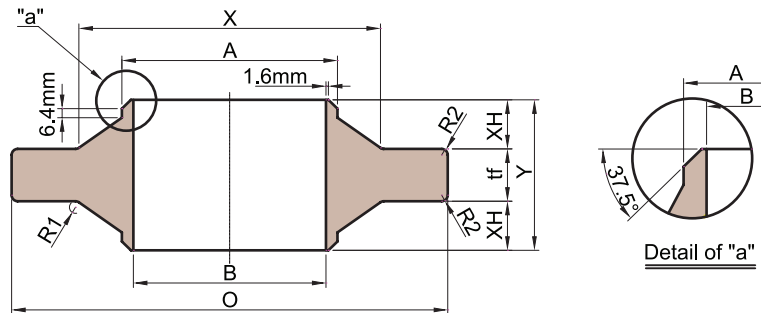
CLASS 1500 FLANGES



Unit : mm

Nominal Pipe Size	I.D of Flange	O.D of Flange	Thick-ness	Length Through Hub	Length Through Hub	Diam. Of Hub	Hub Diam. Top	Fillet Radius Min.	
	B	O	tf	XH	Y	X	A	R1	R2
1/2	15.8	120.7	22.4	19.1	60.5	38.1	21.3	4	2
3/4	20.9	130.0	25.4	22.2	69.9	44.5	26.7	4	2
1	26.6	149.4	28.4	22.4	73.2	52.3	33.5	4	2
1 1/4	35.1	158.8	28.4	22.4	73.2	63.5	42.2	4	2
1 1/2	40.9	177.8	31.8	25.4	82.6	69.9	48.3	4	2
2	52.5	215.9	38.1	31.8	101.6	104.6	60.5	4	3
2 1/2	62.7	244.3	41.1	31.8	104.6	124.0	73.2	4	3
3	77.9	266.7	47.8	34.8	117.3	133.4	88.9	4	3
4	102.3	311.2	53.8	35.1	124.0	162.1	114.3	6	3
5	128.2	374.7	73.2	41.1	155.4	196.9	141.2	6	3
6	154.1	393.7	82.6	44.5	171.5	228.6	168.4	6	3
8	202.7	482.6	91.9	60.5	212.9	292.1	219.2	6	4
10	254.5	584.2	108.0	73.0	254.0	368.3	273.1	8	4
12	304.8	673.1	124.0	79.2	282.4	450.9	323.9	8	4
14	336.6	749.3	133.4	82.6	298.5	495.3	355.6	8	4
16	387.4	825.5	146.1	82.6	311.2	552.5	406.4	8	4
18	438.2	914.4	162.1	82.6	327.2	596.9	457.2	10	4
20	489.0	984.3	177.8	88.9	355.6	641.4	508.0	10	4
24	590.6	1168.4	203.2	101.6	406.4	762.0	609.6	10	4

CLASS 2500 FLANGES



Unit : mm

Nominal Pipe Size	I.D of Flange	O.D of Flange	Thick-ness	Length Through Hub	Length Through Hub	Diam. Of Hub	Hub Diam. Top	Fillet Radius Min.	
	B	O	tf	XH	Y	X	A	R1	R2
1/2	15.8	133.4	30.2	21.5	73.2	42.9	21.3	4	2
3/4	20.9	139.7	31.8	23.7	79.2	50.8	26.7	4	2
1	26.6	158.8	35.1	26.9	88.9	57.2	33.5	4	2
1 1/4	35.1	184.2	38.1	28.6	95.3	73.2	42.2	4	2
1 1/2	40.9	203.2	44.5	33.4	111.3	79.2	48.3	4	2
2	52.5	235.0	50.8	38.1	127.0	95.3	60.5	4	3
2 1/2	62.7	266.7	57.2	42.8	142.7	114.3	73.2	4	3
3	77.9	304.8	66.5	50.8	168.1	133.4	88.9	4	3
4	102.3	355.6	76.2	57.2	190.5	165.1	114.3	6	3
5	128.2	419.1	91.9	68.3	228.6	203.2	141.2	6	3
6	154.1	482.6	108.0	82.6	273.1	235.0	168.4	6	3
8	202.7	552.5	127.0	95.3	317.5	304.8	219.2	6	4
10	254.5	673.1	165.1	127.0	419.1	374.7	273.1	8	4
12	304.8	762.0	184.2	139.7	463.6	441.5	323.9	8	4
14	336.6	641.4	85.9	63.5	212.9	450.9	355.6	8	4
16	387.4	704.9	88.9	63.5	215.9	508.0	406.4	8	4
18	438.2	787.4	101.6	63.5	228.6	565.2	457.2	10	4
20	489.0	857.3	108.0	69.9	247.7	622.3	508.0	10	4
24	590.6	1041.4	139.7	76.2	292.1	749.3	609.6	10	4